

M16 x 2.0 THREAD x 1.25 DEEP  
C'BORE DIA .670 x .320 DEEP

PRECISION GROUND  
FOR DUAL CONTACT FIT

Ø 2.48

Ø 1.75

Ø 1.08

SK10-HT10 COLLET NUT

.65

2.58

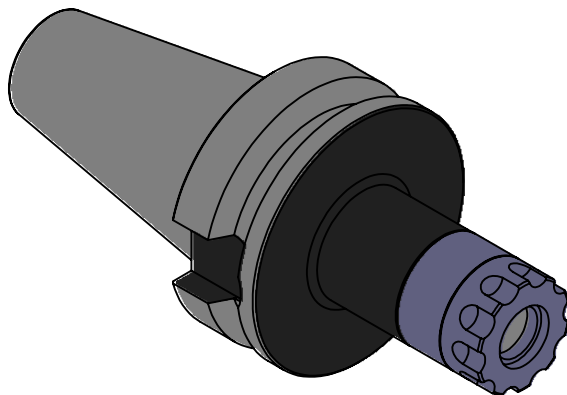
0

.04

1.06

2.04

3.00



NOTES:

WORKS ON ALL BT40 MACHINES WITH DUAL CONTACT SPINDLES  
COMPATIBLE WITH BIG-PLUS® SPINDLES  
TAKES ALL SK10 COLLETS FROM .078"-.393"  
USES WRENCH PART # HT10-TWA TORQUE WRENCH (NOT INCLUDED)  
FOR MORE PRODUCT DETAILS PLEASE GO TO MARITOO.COM  
AND SEARCH ITEM # LISTED ON THIS PRINT

**MARITOO**

WWW.MARITOO.COM

ITEM# **BT40 SK10-3.0D-HT**

Made in USA